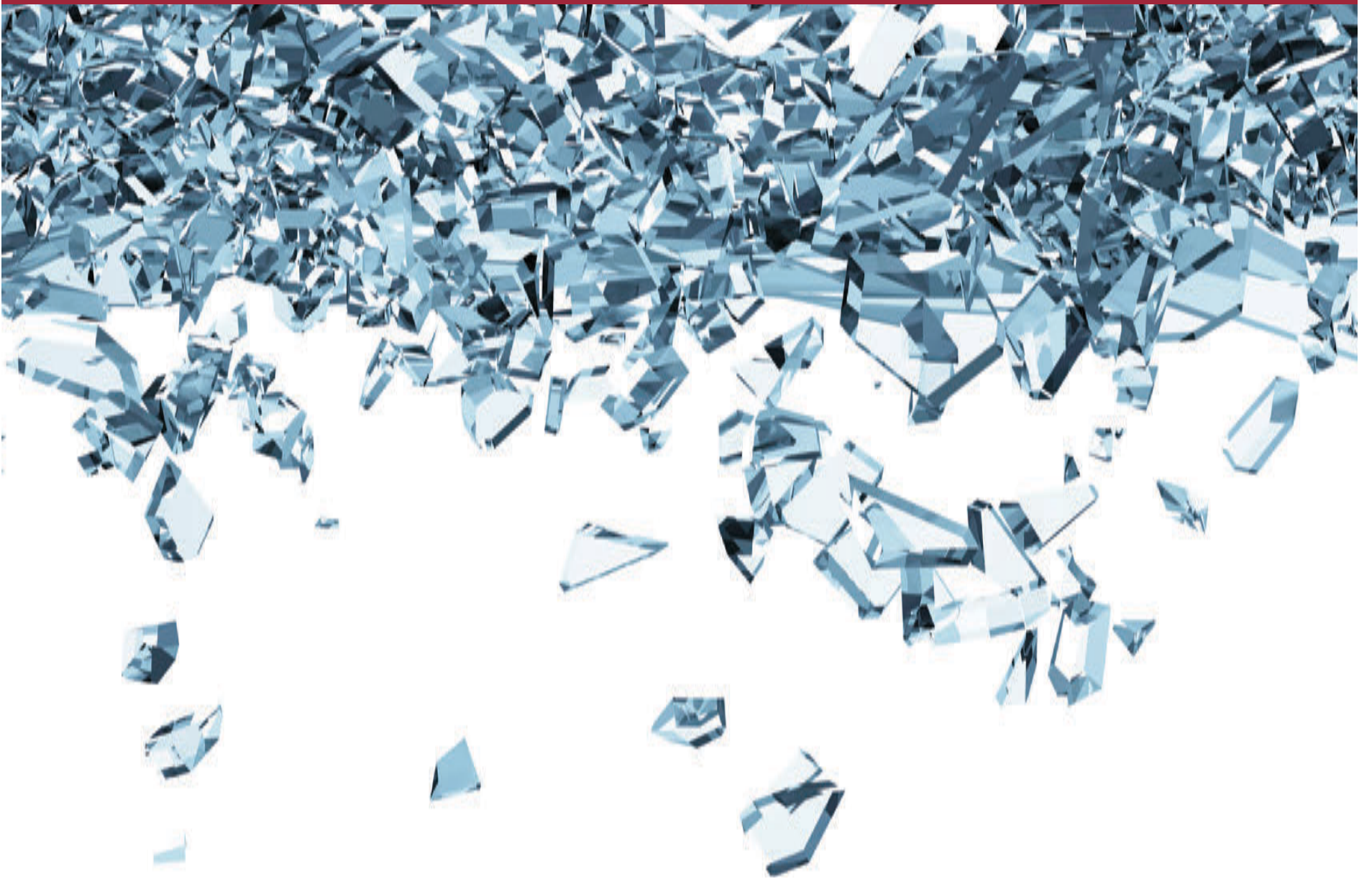


CUSTOM CONTENT

APRIL 27, 2020

# TOP WOMEN ATTORNEYS IN LOS ANGELES

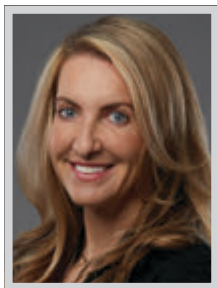


**W**ELCOME TO THE 2020 EDITION OF OUR ANNUAL SPECIAL SUPPLEMENT HONORING LA'S MOST INFLUENTIAL women attorneys. According to the American Bar Association, 38% of practicing attorneys today are women – and that number will continue to move toward balance when you consider that law school enrollment is currently 49% female. Los Angeles is truly a national leader when it comes to influential women – and the field of law is no exception. There are some particularly stellar attorneys in the LA region who happen to be women and we've alphabetically listed some of the best of them here, along with information about their careers, practice and some relevant recent successes they've achieved.

These are the honorees and finalists we singled out for exceptional legal skill and achievement across the full spectrum of responsibility, exemplary leadership as evidenced by the highest professional and ethical standards, and for contributions to the Los Angeles community at large.

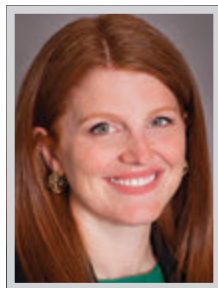
Congratulations to the superb attorneys who made this list and thank you for all you do for the people and businesses of the Los Angeles region.

## TOP WOMEN ATTORNEYS

**KOREN BELL**

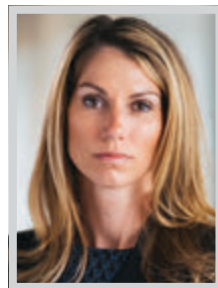
Partner  
Larson O'Brien LLP

**K**oren L. Bell is a partner at Larson O'Brien LLP. She is an experienced trial and appellate lawyer with a record of success litigating high-stakes cases. In courtrooms across the country, Bell has handled complex white-collar criminal matters — including as Counsel of Record in the U.S. Supreme Court — and civil matters — including as trial counsel for the NCAA in a highly publicized defamation case. She has represented both plaintiffs and defendants, including Fortune 500 companies, diplomats, and high-net-worth individuals, in all types of cases across a range of industries — including pharmaceutical, transportation, financial services, and sports and entertainment. Bell is bilingual and regularly represents Spanish-speaking clients. Through aggressive, creative, focused advocacy, Bell delivers results for her clients both before and after trial.

**KIMBERLY BRANSCOME**

Partner  
Kirkland & Ellis

**K**imberly Branscome has established herself as a sought after trial lawyer in high-stakes product liability and mass tort cases. In November 2019, she secured her second complete defense verdict on behalf of Johnson & Johnson in another highly publicized litigation involving claims that Johnson & Johnson's baby powder contains asbestos (the jury returned a unanimous verdict in favor of Johnson & Johnson, finding that the Baby Powder performed safely and did not, in fact, cause the plaintiff's disease). Recognizing her expertise in mass tort litigation, Branscome was also engaged by 3M to represent them in multi-district cases involving claims that 3M's combat earplugs caused hearing loss. Branscome also had a lead role in the Deepwater Horizon litigation on behalf of BP and multi-state ignition switch litigation on behalf of General Motors.

**CELESTE BRECHT**

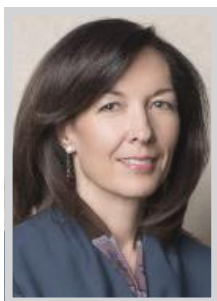
Partner; Co-chair, West Coast Litigation Group  
Venable LLP

**C**eleste Brecht has accomplished more before the age of forty than many lawyers do in their entire career. In 2019 she became an equity partner, and in 2020 she was named co-chair of Venable's California litigation group, which includes 50 attorneys in offices in Los Angeles and San Francisco. She is also an accomplished first-chair trial lawyer who has led and been a member of multiple trial teams in state and federal courts, has successfully argued before the California Courts of Appeal, and has obtained favorable jury verdicts and results in a variety of administrative forums. Brecht is on the board of governors and serves as co-chair of the courts committee for the Los Angeles chapter of the Association of Business Trial Lawyers (ABTL), an organization that provides a forum in which litigators and judges meet to address issues important to business trial lawyers.

**JENNIFER M. BRODER**

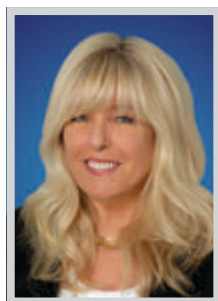
Partner  
Munger, Tolles & Olson LLP

**W**ith a diverse practice that intersects corporate and securities law and includes advising a range of high-profile clients, Jennifer M. Broder is widely recognized as a rising star in law. Broder was elected to the Munger, Tolles & Olson partnership in 2019 at 35, after only six years with the firm. Since becoming partner, Broder has played pivotal roles on many of Munger's most significant corporate transactions. Prior to joining the firm, Broder served as a law clerk to the Honorable Leo E. Strine, Jr. while he was Chancellor on the Delaware Court of Chancery. In addition to maintaining a thriving corporate law practice, Broder is actively involved in the Los Angeles community and the legal community nationwide. She is also a member of the Wolters Kluwer Securities Law Advisory Board.

**JENNIFER WOO BURNS**

Partner  
Scali Rasmussen PC

**J**ennifer Burns has served as in-house and outside employment counsel for auto dealer groups, which provides her with a grounded perspective in handling employment-related compliance matters. As outside counsel, she advised businesses regarding compliance with employment laws and defended businesses in employment litigation, including participating in multiple jury trials for wrongful termination and discrimination lawsuits. She co-founded Pacific HR Alliance, providing businesses with cost-effective Human Resources compliance support. As outside counsel, Burns gained exposure to many industries and acquired the expertise of a legal practitioner. In addition, she gained an understanding of the operational realities of the automotive industry and successfully collaborated with management to achieve legal compliance and business objectives. She has provided legal representation through advice/counsel and document drafting for numerous employer clients of all sizes, focusing on preventative/compliance measures.

**CANDACE CARLO**

Partner  
Kleinberg Lange Cuddy & Carlo

**C**andace Carlo, partner at Kleinberg Lange Cuddy & Carlo LLP, has a unique entertainment law practice that spans motion pictures, television, and music. Her representations include top clients such as Academy Award and Golden Globe-winning composer Hans Zimmer, Academy Award winner Brenda Chapman, and composer Heitor Pereira. She handled a number of producer, director, on-camera talent and rights deals in 2019, including her work on behalf of Sega/Marza Animation for the financing, production and distribution of Sonic the Hedgehog. She also oversaw financing, production and distribution of the film Luce for Dream Factory and represented Academy Award winner Brenda Chapman directing her first live action film Come Away. Among other notable work has been representing bestselling author Rhonda Byrne of the best-selling book The Secret in her deal to grant film rights in the book and produce the feature film The Secret: Dare to Dream.

**VICKI CHOU**

Of Counsel  
Hueston Hennigan LLP

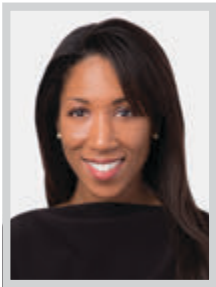
**V**icki Chou is Of Counsel and a key member of the White Collar and Investigations team at Hueston Hennigan. She is a seasoned trial and appellate attorney and recently served as a Deputy Chief in the U.S. Attorney's Office in the Central District of California. As an AUSA in the Central District of California, she represented the United States in hundreds of criminal cases, including computer and internet fraud, intellectual property, money laundering, bank fraud, tax fraud, and racketeering offenses. Many of her matters involved high level, international coordination, including a case in which she successfully negotiated a first of its kind joint investigative agreement with a European country. She has successfully tried over 10 cases as lead counsel and won every one of her appeals before the Ninth Circuit. She was awarded the National Intelligence Meritorious Unit Citation for her work involving China.

**MICHELLE COOKE**

Partner; Leader of Intellectual Property Protection and Enforcement Practice  
Manatt, Phelps & Phillips, LLP

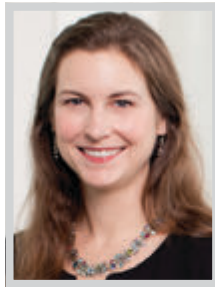
**O**ver the course of 27 years, Michelle Cooke, leader of Manatt, Phelps & Phillips, LLP's intellectual property protection and enforcement practice, has established herself as the go-to attorney for companies facing complex, multijurisdictional trademark disputes. Known for the breadth and depth of her knowledge of the intellectual property landscape in the United States and abroad, companies turn to Cooke for the development of their long-term intellectual property programs. In addition to her extraordinary understanding of the full gamut of intellectual property issues, Cooke's clients also benefit from her international approach to preplanning, management and vigilance matters, as well as her masterful guidance through delicate brand rehabilitation issues. Among her clients are well-known companies in the entertainment, multimedia, software, apparel and consumer products industries.

## TOP WOMEN ATTORNEYS

**KANIKA CORLEY**

Partner  
Akerman LLP

Clients turn to Kanika Corley for strategic counsel and risk assessment when contemplating major business decisions, including anticipated litigation. She has extensive experience advocating for the rights of her clients through arbitration and trial, assisting with appeals, advising on best methods for dispute resolution, advising on deal terms and business structures, and managing rights acquisitions. Her practice also includes resolving all aspects of soft intellectual property issues, disputes over trade secrets, defamation, and privacy rights. Recent matters include her work representing the largest casual and social games developer in Brazil in defense of an action filed by a California-based entity seeking a declaration that an injunction issued in a domestic arbitration that the games developer initiated in Brazil was unenforceable in the United States. The Central District of California dismissed the claims.

**ELIZABETH DUBECK**

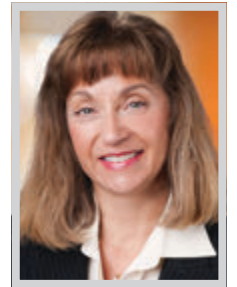
Partner  
O'Melveny & Myers LLP

A leader in O'Melveny's Project Development and Finance Practice, Liz Dubeck regularly manages multidisciplinary legal teams on high profile, complex project finance and development transactions. She has guided clients, including major financial institutions, developers, and project sponsors, on some of the largest and first-ever infrastructure public-private partnership projects in the United States, and has particular knowledge of such transactions in the transportation sector. She has also received numerous awards and honors for her project finance and development legal work, and is a frequent speaker at leading infrastructure conferences and seminars. Dubeck is co-leading the O'Melveny finance team representing American Airlines in its financing arrangements related to the airline's effort to redevelop Terminals 4 and 5 at LAX. The project, which is estimated to cost \$1.6 billion, is currently under construction and estimated to be completed in time for the 2028 Summer Olympics in Los Angeles.

**KATHRYN F. EDGERTON**

Partner  
Nelson Hardiman LLP

A key member of Nelson Hardiman's Regulatory Compliance and Transactional practice groups, Kathryn F. Edgerton has built a significant practice advising hospitals, physician organizations, long-term and behavioral health providers, telemedicine providers, home health providers, medical spas, and other health-related organizations on the complex transactional and regulatory issues impacting the healthcare industry. Edgerton has originated 82 of her own clients. While many came by client referral, which speaks highly of her legal acumen, others learned of her through her 24 speaking engagements over the past three years. Edgerton's superpower, however, is her organizational skill, which enabled her to flawlessly juggle 171 firm matters (101 related to addiction treatment) since the beginning of 2018. With unparalleled success and productivity, it's no wonder Nelson Hardiman made her the youngest female partner in the firm's history.

**BONNIE E. ESKENAZI**

Partner  
Greenberg Glusker LLP

While Bonnie Eskenazi had an early interest in theater as a teenager, she also enjoyed studying politics and law. This led to a successful practice in entertainment law where she has been able to combine her two passions, regularly handling groundbreaking matters and some of Hollywood's most high profile and landmark entertainment disputes. Eskenazi represents plaintiffs and defendants in a variety of entertainment litigation matters, including disputes about royalties and profit participation, copyright ownership, trademarks, idea theft, contracts, defamation, invasion of privacy, merchandise and licensing, music distribution, and new technology. Demonstrating the uniqueness of her practice, Eskenazi also handles various entertainment transactional matters, and serves as the outside general counsel for the Estate of Bob Marley, including having negotiated a ground-breaking cannabis branding deal for Marley Natural, and protecting the copyrights, trademark rights and publicity rights of the reggae icon.

**DEBORAH J. FOX**

Principal  
Meyers Nave Riback Silver & Wilson, PLC

Deborah Fox is a Principal in the Los Angeles office of Meyers Nave. She is a member of the firm's three-person Executive Committee. She founded, built and leads two of the firm's most prominent statewide practices – its Trial and Litigation practice and its First Amendment practice. The cases that Fox handles confirm her reputation as a go-to attorney for a specialty area of legal expertise – high impact litigation and crisis management. She is selected by government entities, such as cities, counties and special districts, to handle their most complex, controversial and critical matters that are already front-page news or likely to become a headline as the case unfolds. The precedent-setting impact of her work was confirmed on February 19, 2020 when the California Supreme Court announced that it accepted for review one of Fox's first-impression cases with the potential for statewide impact.

**LISA GILFORD**

Partner  
Sidley Austin LLP

Lisa Gilford is considered one of the preeminent first-chair trial lawyers in the country, representing clients in a wide variety of industries, including automotive, pharmaceutical, communications, oil and gas, aerospace and chemical manufacturing, sports and higher education. Her stellar reputation representing big-name clients in class action cases, multidistrict litigation, product liability matters and large-scale commercial disputes has earned her multiple accolades from various trade and industry publications. In the past year, she successfully settled a case against the NBA and was recently retained by Honda to handle 14 class actions. Gilford is a frequent lecturer on topics including consumer protection and unfair competition claims, successful defense of class actions, best practices for outside counsel, and professional development for women lawyers and other diversity issues. She is particularly adept at handling matters with scientific or technical aspects, and frequently works with and prepares technical experts for deposition and trial.

**KATE GOLD**

Partner  
Proskauer Rose LLP

With over 25 years of experience representing clients in a range of industries, including entertainment, financial services, aerospace and healthcare, across all areas of employment law, Kate Gold is a seasoned litigator and trusted advisor. Her clients – household names who regularly entrust her with their most significant legal challenges – include CBS Broadcasting Inc., Valence Media, FremantleMedia, Refresco, The Aerospace Corporation, City of Hope, Boston Consulting Group and Arrowhead Products. Outside of her high profile legal work, Gold, a native Angeleno, serves as a board member of the Constitutional Rights Foundation and a Vice-Chair of its Expanding Horizons Internship program.

**NICOLE GORDON**

Partner  
The Sohagi Law Group

Nicole Gordon is a partner at The Sohagi Law Group in Los Angeles, advising public agencies on complex environmental and land use planning matters at the administrative, trial, and appellate level. She focuses her practice on the California Environmental Quality Act (CEQA), the National Environmental Policy Act (NEPA), the federal and California Endangered Species Act (ESA), and Planning and Zoning Laws. As the 2018-2019 Chair of the Executive Committee of the Environmental Law Section of the California Lawyers Association (formerly a division of the State Bar), Gordon is at the forefront of the environmental law issues with which public agencies must grapple. Gordon is also a frequent lecturer on environmental matters at various public and private workshops, including courses and conferences sponsored by UCLA, Continuing Legal Education (CLE), the Association of Environmental Professionals (AEP), and the American Planning Association (APA).



Holland & Knight congratulates our own

## Vivian Lee Thoreen

and all of the *Los Angeles Business Journal's* 2020 Top Women Attorneys.

# Holland & Knight

[www.hklaw.com](http://www.hklaw.com)

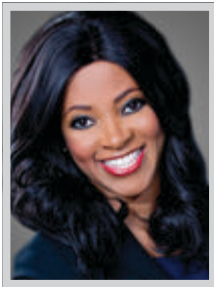
Los Angeles, CA | 213.896.2400



### Mansfield Rule Certification

Holland & Knight has achieved “Mansfield Rule Certified Plus” status from the Diversity Lab for the second year in a row (2018, 2019). The designation recognizes that the firm has successfully reached at least 30 percent diverse lawyer representation in a notable number of its current leadership roles and committees.

## TOP WOMEN ATTORNEYS

**SAMANTHA GRANT***Partner*

Sheppard Mullin Richter &amp; Hampton LLP

Samantha Grant, partner at Sheppard Mullin, is the first woman of color ever elected as Chair-Elect of the ABA Section of Labor and Employment Law and assumes the role of chair in August of this year. She is a nationally recognized advocate for employers in arbitration, administrative and trial proceedings. She finds targeted solutions for clients facing internal and external complaints while considering the business objectives and promoting positive organizational cultures. She is also a leading voice for promoting diversity and inclusion in the profession and leverages her role as vice-chair of the Minority Corporate Counsel Association to help law departments and law firms become more inclusive. Further, she is a strong advocate of promoting access to justice and service to the courts. To that end, she has served as a member of the USDC for the Central District's Merit Selection Panel.

**MARISSA ROMÁN GRIFFITH***Partner/ Entertainment Group*

Akin Gump Strauss Hauer &amp; Feld LLP

Akin Gump Los Angeles partner Marissa Román Griffith is a recognized leader, groundbreaker and influential player in the media and entertainment sector. Among the very few senior Latina attorneys in private practice specializing in media and entertainment transactions, Griffith regularly handles multimillion-dollar deals for financiers, borrowers, distributors and others involved in various aspects of the production, financing and distribution of film, television and digital content, including credit facilities, domestic and international co-financing agreements and slate transactions. Recently, Griffith has continued to show her significant influence in the industry, leading deal teams in sophisticated representations for clients such as Media Rights Capital (MRC) and its affiliates who she has represented in connection with MRC's financing activities in film and TV, including the co-production and co-financing arrangements for films as well as the financing arrangements for TV series.

**MIRA HASHMALL***Partner*

Miller Barondess LLP

Mira Hashmall is an experienced litigator who represents clients in all phases of litigation, from pre-litigation counseling to appellate proceedings. She has successfully represented clients in federal and state court jury trials, including healthcare companies, commercial banks, government agencies, and entertainment studios, among many others. She specializes in employment litigation matters involving race and gender discrimination, retaliation, wage and hour, and wrongful termination claims for private and public employers. Hashmall is a Certified Appellate Specialist and heads the appellate department at Miller Barondess. She has represented clients in appellate proceedings before the U.S. Supreme Court, the Courts of Appeals for the Sixth, Ninth and Tenth Circuits, and the California Courts of Appeal. She has obtained appellate victories for clients in federal appeals involving First Amendment claims, insurance coverage issues, defamation and libel claims, and employment disputes.

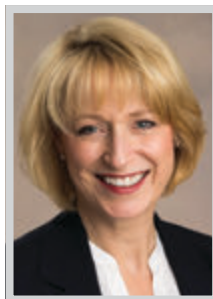
**SHAWN HOLLEY***Partner*

Kinsella Weitzman Iser Kump &amp; Aldisert

Shawn Holley, partner at preeminent entertainment litigation boutique Kinsella Weitzman Iser Kump & Aldisert, routinely represents top entertainment talent in highly publicized cases. She began her career as a Los Angeles County Public Defender, handling hundreds of serious criminal cases from inception to trial. She was the managing partner of the Los Angeles office of The Cochran Firm and the head of its national Criminal Defense Section. With more than 60 trials to her credit, Holley is the rare trial attorney who practices in the areas of both civil and criminal litigation. Among others, Holley has represented or currently represents Kanye West, Justin Bieber, Lindsay Lohan, Nicole Richie, Paris Hilton, Michelle Rodriguez, the Kardashian/Jenner family, Katt Williams, She-mar Moore, Michael Jackson, Tupac Shakur, Snoop Dogg, The Game, Axl Rose, Mike Tyson, Sugar Ray Leonard, Lamar Odom and Reggie Bush.

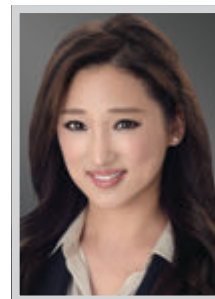
**SARAH KELLY-KILGORE***Administrative Partner, Los Angeles Office*  
Greenberg Gross LLP

As administrative partner of Greenberg Gross LLP's Los Angeles office, Sarah Kelly-Kilgore is regularly called upon to represent clients in the firm's most high-profile matters, including a groundbreaking gender discrimination lawsuit against Ogle-tree, Deakins, Nash, Smoak & Stewart, P.C.; a blockbuster trade secrets lawsuit against ridesharing giant Uber Technologies, Inc.; and civil and criminal matters involving entertainer Bill Cosby. Clients have come to know Kelly-Kilgore for her ingenuity, courage and leadership, with one of the firm's most high-profile clients praising her as a "platinum attorney who performs well beyond [her] experience." Her work ethic and legal acumen have also garnered respect and recognition from her peers, and she has made headlines within the legal community and the public at large for her role as lead counsel in two cases before the U.S. Supreme Court, both of which involved significant First Amendment issues.

**CHRISTIANNE KERNS***Managing Partner*

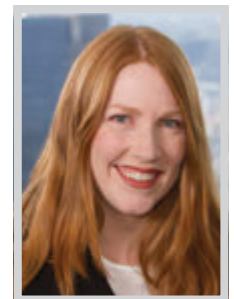
Hahn &amp; Hahn LLP

Christianne Kerns is the managing partner of Hahn & Hahn LLP. In this role, Kerns is responsible for managing day to day business operations, developing, implementing and driving organizational goals, procedures and policies, managing firm lawyers and the Director of Administration, collaborating with other partners, and maintaining positive client relationships. Kerns' expertise extends to a wide variety of real estate and commercial transactions and general business matters, with emphasis in commercial and real estate finance and finance work outs. She is a trusted board member and advisor to boards of directors, equity holders, and C-suite executives with a track record of identifying and effectively addressing risk and legal issues as well as strategic and operational challenges with the overarching goal of optimizing results, value, and ROI. In her law practice, she represents a number of organizations, often serving as their outside general counsel.

**CANDICE E. KIM***Shareholder*

Greenberg Traurig, LLP

Impressive successes in client service, community involvement, and leadership are all highlights of Candice Kim's notable past year of achievement. She is a shareholder in global law firm Greenberg Traurig's Los Angeles office and member of the firm's Trademarks/Brand Management practice. Her practice focuses on the clearance, procurement, maintenance, enforcement, licensing, and monetization of intellectual property rights, including trademarks, trade dress, domain names, copyrights and rights of publicity. Notably, she co-manages the firm's largest trademark client, United Parcel Service (UPS). Kim has risen to her respected status as a shareholder by investing significant time and effort in getting to know her clients, their business, and their industry. She has built her reputation among clients and peers in delivering legal services of the highest quality and efficiency. She counsels clients on all aspects of the branding process.

**CHRISTIANE KINNEY***Partner*

Kinney Law, P.C.

Christiane Kinney started out as a musician before she became a music attorney and advocate for other artists. Her experience on both sides of the fence is a comfort to her clients, who consider her a trusted advisor and confidant who uniquely understands the struggles and victories they go through as artists. Representing both major and independent artists, she is known for being innovative and creative in her approach to making deals for her clients. She played a major role in closing two multi-million dollar music catalog sales, both on the seller's side, handling the due diligence for each sale. She also acted as co-counsel for Experience Hendrix, LLC and Authentic Hendrix, LLC in a major litigation dispute against Andrew Pitsicalis, Leon Hendrix, and various defendants venued in the Southern District of New York, which ultimately settled with a \$2 million judgment and a permanent injunction.

Congratulations



**ALISON PLESSMAN**  
**VICKI CHOU**

**Top Women Attorneys**  
*—Los Angeles Business Journal*

---

## TOP WOMEN ATTORNEYS

**YUKIKO KOJIMA**

Partner, Infrastructure Group  
Nossaman

**Y**ukiko Kojima offers clients unique experience with highly innovative alternative delivery strategies for large-scale infrastructure projects in the U.S. because of her deep knowledge of national best practices as well as Canada's mature P3 market. She primarily advises public agencies in the use of methods such as P3 and design-build, but also represents private-sector participants on select projects. Yukiko takes an active role in Nossaman's P3 practice initiatives in the social infrastructure area, and co-authored the Firm's model social infrastructure P3 legislation. Before joining Nossaman, she was a partner in the leading P3 practice of a Canadian law firm in Vancouver and Tokyo where she assisted successful and shortlisted bidders on numerous award-winning P3 projects in Canada. Prior to focusing on P3s, she practiced mergers and acquisitions as well as general corporate/commercial law at top-tier firms in the United States and Canada.

**LINDA KORNFELD**

Partner and Vice Chair of Insurance Recovery Practice  
Blank Rome LLP

**L**inda Kornfeld is one of the nation's most prominent insurance recovery attorneys, representing corporate policyholders in high-stakes litigation for more than 25 years. She is an outstanding attorney, having distinguished herself in a highly competitive, male-dominated field as one of the leaders in insurance recovery law. Using strategic, creative approaches in her trial and appellate practice, Kornfeld works with clients to recover hundreds of millions of dollars in insurance assets, serving as strategic adviser to senior executives and in-house counsel on mitigating risk and maximizing insurance recoveries. Kornfeld has distinguished herself in a highly competitive, male-dominated field as one of the leaders in insurance recovery law; she is one of only six women ranked in her field in California by the distinguished ranking publication, Chambers USA. Kornfeld handles matters that are frequently in the news, ranging from cyber security, data breaches, and privacy issues.

**JANET KWUON**

Partner  
Reed Smith LLP

**J**anet Kwuon is a partner in Reed Smith's Los Angeles office. She defends clients in complex (often multi-plaintiff) tort and commercial disputes litigation in state and federal courts. Kwuon often works on multi-district litigation, class actions, and coordinated actions, serving either as national and lead counsel or as regional or local counsel as part of a broader legal team. Her clients include pharmaceutical and medical device companies (from start-ups to large global companies), managed care companies, and higher education institutions. High-stakes litigation suits Kwuon's ability to craft strategies that help drive the clients' litigation and business goals forward. She is a zealous advocate and aggressive litigator who also stays carefully attuned to circumstances, which demand a more nuanced approach. She manages legal teams that range from 2 to 120 lawyers and often span offices across the U.S. or globe.

**AMY LALLY**

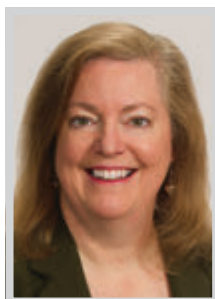
Partner  
Sidley Austin LLP

**A**my Lally is the global co-leader of Sidley's Consumer Class Action practice and has built her reputation as one of the leading consumer class action lawyers in the country through her successful defense of some of the largest companies in the consumer products and services industries, including Burlington, CVS, Newegg, Saks and Charter Communications. She has a phenomenal track record of winning dismissals in a wide range of disputes, particularly class actions. Her winning streak extends to her pro bono work. She recently won the 2019 Public Counsel Pro Bono award for leading a large cross-office Sidley team that successfully challenged the government's policies of separating refugee parents from their children, holding them in prolonged detention, and denying them access to mental health services to address the consequences of separation. Her pro bono team's victory was widely covered by major news outlets.

**IRENE Y. LEE**

Partner  
Russ August & Kabat

**I**rene Lee is a partner at Russ August & Kabat, where she focuses her practice on all aspects of intellectual property, including patent, trademark, trade secret, copyright, and IP licensing. Lee has extensive experience in trademark and copyright prosecution, litigation, and licensing with an emphasis on global brand expansion and management through strategic trademark and copyright protection and enforcement programs. In addition, as a registered patent attorney, Irene employs her patent prosecution experience in strategizing patent litigation and licensing issues. Lee represents clients in a wide range of industries, including automobile, entertainment, fashion, advertising, pharmaceutical, integrated circuits, security and surveillance, housewares, baby products, and food and beverages. Clients from varying industries seek and heed Lee's advice and her peers respect her opinion because of her considered and precise legal analysis balanced against her practical and pragmatic approach to legal problems with real life solutions.

**MARGARET LODISE**

Partner  
Sacks Glazier Franklin & Lodise LLP

**M**argaret Lodise has established an impressive reputation in her 32-year career for handling some of the most complex and high-dollar trusts and estates disputes through trial and appeal. Among her high-profile representations, she has served as guardian ad litem for Michael Jackson's three children for the past decade, overseeing their financial interests in all matters relating to Jackson's estate. Lodise's work stands out in the legal marketplace for the ways in which she's helping to shape the future of trusts and estates law. As Chair of the American College of Trust and Estate Counsel's Amicus Briefs committee, Lodise works to improve trust, estate and tax laws, procedures and professional responsibility by filing amicus briefs. Notably in 2019, Lodise, along with committee members, filed an influential amicus brief for a North Carolina trust tax case in which the U.S. Supreme Court agreed with ACTEC's position in a rare 9-0 decision.

**DANA LOWY**

Partner  
Meyer, Olson, Lowy & Meyers LLP

**F**ounding partner Dana Lowy represents high net worth men and women in all types of family law matters, from Prenuptial and Postnuptial Agreements to marital dissolution actions, protecting her clients' financial interests while also considering the emotional aspects that often arise. Prenuptial and Postnuptial Agreements are a practice focus for Lowy. She has guided multiple generations of dynastic families, high-profile entertainers, athletes, executives and remarried baby boomers in successful agreements to protect assets and honor their wishes in successfully negotiated agreements while focusing on the client's individual goals and needs. Lowy eases the path to agreement from the beginning, helping clients communicate with their partners about the process and identifying key areas of protections under California law. She often coordinates with her clients' professional teams, such as business managers, advisors, accountants, and family offices, to ensure efficient and comprehensive strategies that result in fair and reasonable premarital agreements.

**BETHANY GAYLE LUKITSCH**

Partner, Co-Chair of Class Action Practice  
McGuireWoods LLP

**A**fter lawmakers passed the California Consumer Privacy Act (CCPA) in 2018, McGuireWoods Los Angeles partner Bethany Lukitsch became a go-to adviser for companies trying to determine whether the law applies to them and how they should prepare for the law's Jan. 1, 2020, implementation. As co-chair of McGuireWoods' national class action practice, Lukitsch also represents prominent companies in high-stakes litigation matters in state and federal courts throughout the country and she serves on the firm's associates committee. Companies doing business with California consumers face serious penalties for failing to comply with the CCPA. Lukitsch, a member of the firm's data privacy and security team, has been helping corporate clients throughout the country navigate the new regulatory framework and adopt compliance plans from the moment the law was enacted. Lukitsch is recognized nationally as a thought leader in class action litigation issues.



---

 GREENBERG GROSS LLP

---

**Congratulates our Partner**  
**Sarah Kelly-Kilgore**  
and all honorees of the  
*Los Angeles Business Journal's*  
**Top Women Attorneys**

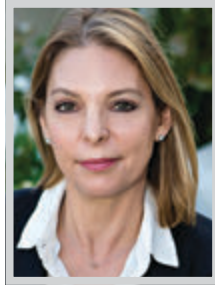


## TOP WOMEN ATTORNEYS

**SUANN MACISAAC***Partner*

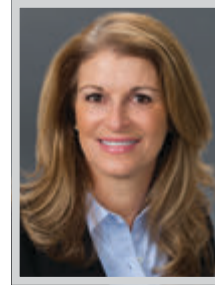
Kinsella Weitzman Iser Kump &amp; Aldisert

Suann MacIsaac, partner at leading entertainment law boutique Kinsella Weitzman Iser Kump & Aldisert, is widely regarded as one of the top attorneys in her field for her representation of high-profile clients. She specializes in entertainment, intellectual property and general business litigation. She has successfully prosecuted and defended numerous cases involving claims for breach of contract, fraud, breach of fiduciary duty, unfair competition, copyright infringement, trademark infringement, and trade secret misappropriation. Among recent successes, MacIsaac, along with Michael Kump, filed a countersuit on behalf of The Mandel Company (dba The Management Group), alleging that its former client Johnny Depp was solely responsible for his poor financial situation. The case was settled in July 2018. She is also currently working with Michael Kump in representing James Parker, the former chief of finance of cannabis retailer MedMen Enterprises, in a highly publicized whistleblower lawsuit.

**NINA MARINO***Co-Managing Partner*

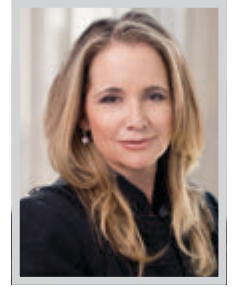
Kaplan Marino

Nina Marino's complex litigation and white collar crime practice is national and international. She negotiates with the U.S. Department of Justice, state attorneys general, District Attorneys, and Interpol in her defense of individuals alleged to be involved with Medicare fraud, Foreign Corrupt Practice Act violations and tax, cyber and other crimes. Recent matters include her work representing Donna Heinel, USC Associate Athletic Director and highest ranking female in the department, who was indicted in the Varsity Blues college admission scandal. She also has been representing Terry Luke, who was indicted with multiple counts of money laundering, capping, and tax fraud. Over the course of two years, a series of hearings on motions to dismiss took place in which the defense strategically dismantled the case. Ultimately, all of the money laundering counts, all of the capping counts, and all of the tax fraud counts were dismissed against Luke.

**COURTNEY MCNICHOLAS***Senior Lawyer*

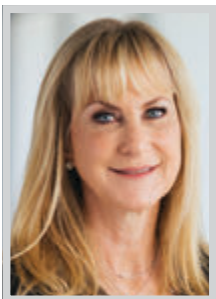
McNicholas &amp; McNicholas LLP

Senior Trial Lawyer Courtney McNicholas advocates relentlessly on behalf of law enforcement whistleblowers. Regardless of the perceived strength of the employer, Courtney has made a name for herself as a woman in law who will fight the toughest battles for clients who have been discriminated against, harassed or retaliated against by the LAPD and other agencies. Among her representative successes is Greg Gonzales et al. v. City of Los Angeles, for which McNicholas obtained a \$2.5 million settlement on the eve of trial in a lawsuit involving four officers from the Internal Surveillance Unit, an elite sector of the LAPD's Special Operations Division, who were retaliated against after reporting that their Captain was retaliating against them for exercising their rights under the Memorandum of Understanding (union agreement) between the Los Angeles Police Protective League and the City.

**ANN MARIE MORTIMER***Managing Partner of the Los Angeles Office*

Hunton Andrews Kurth LLP

At the cutting edge of class action litigation, Hunton Andrews Kurth's Ann Marie Mortimer is one of the premier attorneys in Los Angeles and statewide, handling an impressive volume of high-profile complex business, data security, false advertising, unfair competition, environmental tort claims and related litigation risk from regulatory investigations for some of the nation's largest public and private companies. An elite litigator and a strategic problem solver focused on achieving positive business results in complex cases, Mortimer has a reputation for helping tech giants and well-known global brands navigate multifaceted, high-profile litigation that threatens their fundamental business. She is one of only a handful of female managing partners in California. As the founder and managing partner of the thriving Los Angeles office, she co-heads Hunton Andrews Kurth's commercial litigation practice and is a member of her 1,000-lawyer firm's Executive Committee.

**MICHELE MULROONEY***Partner; Chair, West Coast Tax and Wealth Planning*  
Venable LLP

Michele Mulrooney is chair of Venable's West Coast Tax and Wealth Planning Practice. She focuses her practice on estate planning for high-net-worth individuals, including actors, directors, writers, producers, and artists. She has substantial experience in all aspects of sophisticated estate planning, including the preservation and protection of wealth for generations of families, establishment of and advising private foundations, post-death administration of estates and trusts, cross-border planning for multinational clients, and insurance issues. Mulrooney also has experience in estate planning for majority owners of both private and public companies, including, but not limited to, recapitalizations, buy-sell agreements between shareholders and partners, sales to third parties, and intra-family transfers. Her experience and astute insight into the unique legal needs facing individuals in the entertainment industry have led her to develop a broader service offering for her clients.

**TRITIA MURATA***Partner*

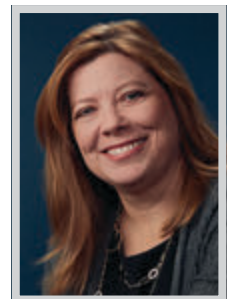
Morrison &amp; Foerster LLP

Co-chair of Morrison & Foerster's Employment and Labor Practice Group, Tritia Murata is a true star in the California labor and employment market. Murata's hallmark is her knack for strategically disposing of high-exposure wage-and-hour class actions and representative actions brought under the Labor Code PAGA of 2004, a California statute authorizing aggrieved employees to file lawsuits to recover civil penalties on behalf of themselves, other employees, and the State of California for Labor Code violations. Her impressive track record of beating putative class actions includes defeating certification in a meal-and-rest break action involving more than 5,000 employees of a restaurant chain, defeating certification in a misclassification action involving hundreds of grocery store managers and assistant managers, and securing dismissal at the pleading stage of a nationwide putative class action alleging that airline employees were not adequately compensated for soliciting and securing credit card applications from passengers.

**POOJA S. NAIR***Partner*

Ervin Cohen &amp; Jessup LLP

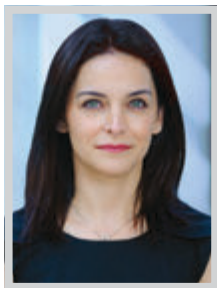
Pooja S. Nair is a business litigator and a problem solver. She is the head of Ervin Cohen & Jessup's Food and Beverage practice group. She handles a comprehensive range of employment issues including compliance, internal investigations, and litigation. She is able to understand business needs to help develop employment practices and procedures that are both compliant with applicable laws and practical. Nair has experience handling internal complaints to de-escalate issues and conduct discrete and thorough internal investigations. She also handles a comprehensive range of business issues in the food and beverage industry, including trade secrets, contract negotiations, intellectual property, licensing, and franchise disputes. Recent highlights include her work second-chairing a four-week financial fraud jury trial in November 2018, which resulted in a \$20.3 million verdict for the client; and her work negotiating a \$900,000 settlement agreement to resolve contract dispute between a food exporter and large customer.

**DAYNA NICHOLSON***Counsel*

Davis Wright Tremaine LLP

Dayna Nicholson's outstanding dedication and commitment to ensuring that her clients' patients receive high quality healthcare has made her a change agent in her field. A self-described "evaluator," Nicholson delivers clear and accurate assessments of the healthcare legal landscape in the context of each client's unique situation, supporting them so they can focus on innovating and improving patient care. Nicholson is a well-versed healthcare attorney who joined Davis Wright Tremaine in 2017. Her practice focuses on operations, regulatory compliance, peer review, credentialing, and corporate and medical staff governance. Her experience also extends to patient information privacy (including data breaches), appeals of state-issued administrative penalties, Medicare and Medi-Cal certification, and emergency-care requirements. She collaborates closely with hospitals, medical staff, ancillary providers, medical groups, clinical labs, medical device retailers, and other players in the healthcare space to identify and implement solutions to common and complex legal hurdles.

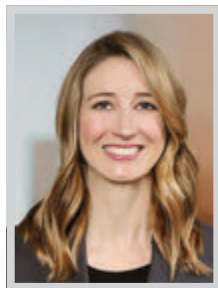
TOP WOMEN ATTORNEYS



**ARAMEH O'BOYLE**

Member  
Mintz

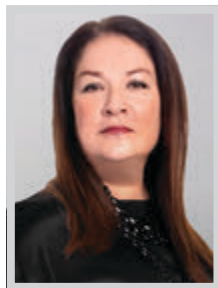
**A**rameh Zargham O'Boyle, member at Mintz, is a trailblazer and is the first female partner in the firm's growing Los Angeles office. In her 15 years of practice, O'Boyle has become one of the most sought after attorneys that product innovators and manufacturers in the pharmaceutical, medical device, personal care and cosmetic sectors rely on when faced with potential or actual litigation. Clients appreciate her aggressive yet pragmatic approach in resolving cases to protect their brand and business interests. O'Boyle concentrates her practice on defending companies in product liability litigation. She counsels manufacturers and distributors on various issues arising throughout a product's life cycle. Clients also rely on her to assess litigation risks and implement effective prevention strategies. She has been an integral part of numerous trial teams defending pharmaceutical and medical device manufacturers in high-profile litigation throughout the country.



**ABIGAIL O'BRIENT**

Member  
Mintz

**A**bigail (Abby) O'Brient is a top-rated bankruptcy attorney practicing at Mintz in the firm's Los Angeles office. She maintains a wide-ranging insolvency and litigation practice focused on representation of secured and unsecured creditors in bankruptcy cases and other insolvency proceedings in California and nationwide. She routinely represents parties in litigation related to insolvency and distressed debt in state and federal court, as well as purchasers and sellers of distressed assets and bankruptcy trustees and receivers. In addition, she has successfully represented numerous chapter 11 debtors through plan confirmation. In a male dominated practice area, O'Brien has risen to the top due to her demonstrated ability to lead successful trial teams and guide buyers in bankruptcy transactions. She has worked on several high-profile cases including representing Marin Clean Energy, a creditor and competitor of the debtors, in PG&E's bankruptcy.



**DOREEN MARIE OLSON**

Partner  
Meyer, Olson, Lowy & Meyers LLP

**D**oreen Marie Olson is a California Certified Family Law Specialist, a designation earned by an elite group of attorneys. As part of her holistic representation, Olson draws from her network of professionals, including educational specialists, therapists, and parenting coaches, to create custody agreements that support parents, children and the future of their families. Her background includes representation of a range of clients and matters, including young parents and same-sex spouses in custody contests and post-judgment matters involving a move away and relocation issues. Appreciated by clients for her responsiveness and emotional IQ, Olson has earned the trust of the family law legal community and formerly served as court-appointed minor's counsel. She is known for her thorough cases preparation, respectful approaches and effectiveness in court, during mediation and in settlement conferences.



**DIANA PALACIOS**

Counsel  
Davis Wright Tremaine LLP

**D**iana Palacios' subject matter expertise in Latin America entertainment and strong belief in First Amendment litigation has made her an immutable force within the media industry. She approaches each case with a strong First Amendment focus and ensuring that the rights of an individual always come first. Palacios first joined DWT in 2011 as a summer associate for the firm, and has since grown and emerged as a leader in her Practice Group. She works on a range of matters, including defamation, records and courtroom access, privacy, right-of-publicity, false advertising, copyright, and trademark issues. She also provides pre-publication and pre-broadcast counseling in both English and Spanish for studios, television networks, production companies, and newspapers. Recently, Palacios was part of the team that successfully defended BBC and Showtime in a lawsuit arising from the documentary "Whitney: Can I Be Me" about the late pop star Whitney Houston.



**HOST A MEMORABLE PRIVATE EVENT AT THE Los Angeles Zoo**

Searching for a fun, unique experience for your next company event? Look no further than the L.A. Zoo. "Wild" is what we do naturally. Whether you're hosting a company picnic, corporate retreat, cocktail party, or dinner, treat your guests to a one-of-a-kind experience with wild enhancements that only the Zoo can offer.



For more info, contact the Private Events department at **323-644-4783** or **events@lazoo.org**

## TOP WOMEN ATTORNEYS

**STACY D. PHILLIPS**

Partner, Matrimonial and Family Law Practice Group  
Blank Rome LLP

Stacy Phillips is one of the country's most well-known and respected family law practitioners, handling primarily high net worth and high profile divorce, custody, and domestic violence cases. She has guided clients through critical transitions in their lives for more than 35 years with experience in every facet of family law. She is known for her skilled persuasion, adept negotiation, aggressive advocacy, and compassion in representing her clients, whether in litigation, mediation, or Collaborative Divorce. She is a Certified Family Law Specialist by the State Bar of California Board of Legal Specialization. Phillips specializes in complex divorce actions, high conflict custody cases, domestic violence matters, pre-nuptial and post-nuptial agreements, same-sex divorce/dissolution matters, and paternity cases. She is also a sought-after commentator on matrimonial issues in the news, having appeared on numerous local and national radio and television shows.

**ALISON PLESSMAN**

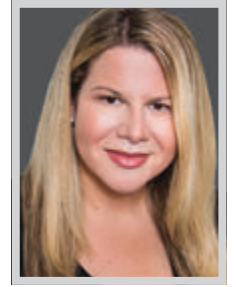
Partner  
Hueston Hennigan LLP

Alison Plessman, a co-founder of Hueston Hennigan LLP, has established herself as a top litigator, representing clients in high-stakes matters, including trade secret theft, mass torts, breach of contract and professional negligence matters, and white collar defense. She recently secured summary judgment against Levine Leichtman Capital Partners in favor of InterDent, Inc., resulting in a dismissal of the matter, and is currently defending Southern California Edison in coordinated proceedings asserting claims arising out of the Thomas Fire in Ventura and Santa Barbara counties, a fire alleged to be the largest in California history, and in litigation arising out of the recent Montecito mudslides that are alleged to be the deadliest flooding event in California in decades. Plessman serves on the Western Center on Law & Poverty Board of Directors and has also served on the Board of Governors of the Women Lawyers Association of Los Angeles.

**ROBYN POLASHUK**

Partner, Co-Chair of Communications and Media Industry Group, and Managing Partner of Los Angeles Office  
Covington & Burling LLP

Robyn Polashuk has more than 20 years of experience in network distribution, both as a lawyer for Lifetime Television as well as in private practice, currently as co-chair of Covington's Communications and Media Industry Group. Her practice encompasses some of the most precedential deals in the television industry, having a significant impact on how content providers make their programming available to viewers. She is called upon by an extensive number of networks and content owners, such as AMC Networks, The Walt Disney Company, Fox Corporation, NFL Network, Ovation, Pac-12 Networks, PBS, Pluto TV, Sony Pictures, TV One, Univision Communications, and ViacomCBS, to advise on high profile distribution agreements and transactions for both traditional and online video platforms and business models.

**BRONWYN F. POLLOCK**

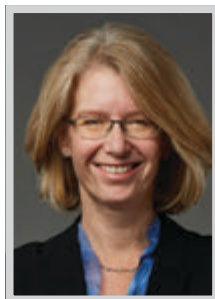
Partner  
Mayer Brown LLP

Mayer Brown partner Bronwyn Pollock is one of California's leading complex civil litigators, trusted by companies such as Bird Rides, First American Title and Caliber Home Loans to handle important and novel cases that test new legal theories, including some that cut to the heart of a company's business model. Pollock also has carved out a niche practice in the entertainment industry, where she litigates and arbitrates business disputes between major industry players. With a practice focused on complex civil litigation – particularly involving the real estate, entertainment, banking, finance, and insurance industries – Pollock has appeared before numerous federal and state courts and arbitrators. In her real estate litigation practice, she advises and represents lenders, investors, property owners, asset managers, and developers in real property matters, including partnership, leasing, foreclosure, construction, receivership, insurance, and civil rights matters.

**JENNIFER POST**

Managing Partner, LA Office  
Thompson Coburn

Jennifer Post serves as the managing partner of Thompson Coburn's LA office. A corporate and securities attorney, Post serves as primary outside counsel to a variety of individuals, institutions and companies, including entrepreneurs, startups and investors, as well as domestic and international public companies. She serves on Thompson Coburn's Management Committee and is the founder of the firm's Blockchain and Digital Currency practice. Dedicated to helping other LGBTQ professionals succeed, Post founded FSIX Advisors Circle, a networking and resource group for LGBTQ professionals in the financial industry. She also founded the West Hollywood Chapter of ProVisors. Additionally, she serves as a member of the Steering Committee of StartOut LA, an organization that provides resources and mentorship to LGBTQ. Post also serves as Thompson Coburn's ambassador to Gaingels Syndicate, a national angel investment syndicate focused on providing early stage capital to growth companies that have LGBTQ leadership.

**HILARY POTASHNER**

Partner  
Larson O'Brien

Hilary Potashner is a partner at Larson O'Brien LLP. She is a skilled courtroom advocate with a wealth of experience and expertise. Potashner has tried dozens of cases to verdict and has argued before the United States Court of Appeals for the Ninth Circuit. With over 25 years of experience, Potashner has successfully defended individuals facing charges in both state and federal court in a wide range of matters, including conspiracy, wire fraud, bank fraud, healthcare fraud, bankruptcy fraud and other white collar cases. Potashner has also represented clients in the other high profile, high-stakes litigation, including homicides, sexual assaults, racketeering, and federal drug offenses. Potashner joined Larson O'Brien LLP after years of serving as Federal Public Defender for the Central District of California. As the Federal Public Defender, Potashner was responsible for leading an office of more than 200 employees with an annual budget of nearly \$40 million.

**SAHARA PYNES**

Partner  
Fox Rothschild LLP

The modern workforce is a legal minefield. When it comes to helping employers navigate the risks, Sahara Pynes, a partner in Fox Rothschild's Labor & Employment department, has long been ahead of the curve, helping clients successfully tackle thorny issues such as sexual harassment and telecommuting, long before they were hot human resources topics. In her practice, Pynes advises a broad range of businesses across multiple industries on compliance with state and federal employment laws relating to workplace discrimination, wage-and-hour laws, disability accommodations, family and medical leave and force reductions. She is also an integral part of Fox Rothschild's industry-leading In-Person Sexual Harassment Prevention Training Team, helping firm clients make the most out of meeting California's requirement that all supervisors undergo two hours of sexual harassment training. Fluent not only in employment law, but also Human Resources principles, Pynes has counseled many clients through periods of rapid employee growth.

**LAURA REATHAFORD**

Partner  
Lathrop GPM

Laura Reathaford joined Lathrop GPM's Los Angeles office and Labor & Employment team in September of 2019, tasked to lead the Employment & Labor practice group's strategic West Coast growth plan. She has built her practice and her reputation on "bet-the-company" cases, in particular defending employers against wage and hour class and representative actions. In other words, when employers are faced with high-stakes, class and representative actions involving thousands of employees, they immediately seek Reathaford's strategic counsel. She represents the management of both public and private businesses across the country in the banking, grocery, fashion, retail, manufacturing, healthcare and telecommunications industries. Her experience includes litigating a variety of employment disputes, including claims for wrongful termination, sexual harassment, unpaid wages, discrimination and representing management against union grievances. She has litigated more than 100 labor and employment cases.

TOP WOMEN ATTORNEYS



**ANGELA REDDOCK-WRIGHT**

*Employment Mediator/Arbitrator*  
Reddock Law Group

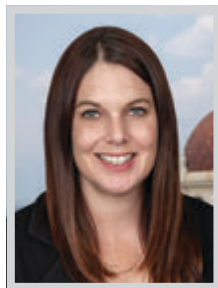
A practicing attorney for nearly 25 years, Angela Reddock-Wright is regarded as a “go-to” attorney and human resources professional when it comes to any issues dealing with the workplace. Reddock-Wright is the founding & managing partner of the Reddock Law Group, a boutique, minority, and woman-owned dispute resolution and investigations law firm based in downtown Los Angeles, focused on the resolution of employment and labor law, Title IX sexual assault, hazing, and bullying legal claims through the alternative dispute resolution, investigation, and other neutral processes. Prior to opening the Reddock Law Group in 2011, Reddock-Wright was an employment and labor law litigator for 15 years. During this time, she represented clients in the full gamut of employment and labor law cases, including wrongful termination, harassment, discrimination, public policy and wage and hour claims. As a full-time neutral and investigator for the last nine years, Reddock-Wright handles similar cases.



**NAEUN RIM**

*Principal*  
Bird, Marella, Boxer, Wolpert, Nessim, Drooks, Lincenberg & Rhow, P.C.

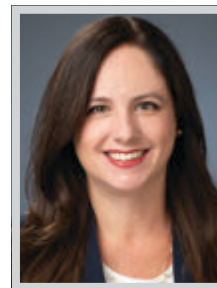
Naeun Rim is a seasoned trial lawyer who specializes in white-collar criminal defense and complex business litigation. She has secured acquittals, dismissals, and favorable sentencing results in a multitude of criminal matters and won arbitrations and secured multi-million dollar judgments in civil cases. Conversationally fluent in Korean, Rim received her B.A. from Columbia University and her J.D. from Harvard Law School. In September 2018, Rim served as trial counsel on the Bird Marella trial team that successfully defended Plains All-American Pipeline, the largest pipeline company in North America, in one of the largest environmental crime trials in California history. After a four-month trial and a series of deadlocks, Bird Marella obtained dismissals and acquittals of 37 out of 46 counts. Rim played a critical role in shaping the defense’s trial strategy and took on direct and cross-examinations of numerous key witnesses.



**CANDICE ROGERS**

*Partner*  
Hahn & Hahn LLP

Candice Rogers is a member of Hahn & Hahn’s litigation practice group. She practices primarily in the area of family law including premarital agreements, post-nuptial agreements, dissolution of marriage, property division, custody and support. She is a Certified Family Law Specialist, certified by The State Bar of California Board of Legal Specialization, skilled in handling complex family law matters. Rogers drafts and negotiates complex premarital agreements, post nuptial agreements, and cohabitation agreements for high profile and high net worth clients, each with unique business and income structures. She has settled and litigated numerous dissolution of marriage actions involving highly contested custody disputes, and complicated income and property issues. She has served on the board of directors for the Harriett Buhai Center For Family Law for the past seven years, two of which served as president of the board.



**WHITNEY JONES ROY**

*Partner; Co-Chair, Environmental Litigation Team*  
Sheppard Mullin Richter & Hampton LLP

Whitney Jones Roy is the co-chair of Sheppard Mullin’s Environmental Litigation Team and served for eight years as the Office Managing Partner in the firm’s Los Angeles Office. She specializes in both environmental litigation and business litigation. Her expertise includes the Clean Air Act, CERCLA, RCRA, Prop 65, design defect, failure to warn, negligence, nuisance, and trespass. Roy spends a substantial portion of her time defending ExxonMobil in MTBE/water contamination litigation. With respect to the most active California MTBE litigation (Orange County Water District v. Unocal, et al.), she handled all aspects of the litigation including coordination of the joint defense group, written discovery, depositions, motion practice, and trial prep. Roy served as lead counsel for Exxon in this matter during the January 2019 federal court trial. She is also the founder of Sheppard Mullin’s Los Angeles Women Lawyers Group and a member of the firm’s Women’s Leadership Council.



**Inclusion Is Everyone’s Business**

We believe that diversity and inclusion are fundamental to our success. Congratulations to Dayna Nicholson and Diana Palacios for being named two of the Top Women Attorneys in Los Angeles.

[DWT.COM/DIVERSITY](http://DWT.COM/DIVERSITY)

Anchorage | Bellevue | Los Angeles | New York  
Portland | San Francisco | Seattle | Washington, D.C.

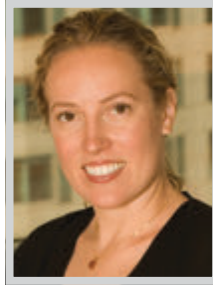


## TOP WOMEN ATTORNEYS

**SARINA SALUJA**

Partner  
Fisher Phillips

As a partner with Fisher Phillips in Los Angeles, Sarina Saluja is a true business partner for her clients, maintaining a thriving legal practice and working side-by-side with employers of all sizes through a variety of employment law issues. Her outstanding track record of successes, plus her various leadership positions and diversity initiatives within the firm and in the broader professional community, positions her among the top women lawyers in California. A trusted advisor to businesses throughout the Greater Los Angeles region, Saluja's focus is always on ensuring a safe and productive workplace. This includes navigating emerging concerns over privacy, data security, unfair competition, and trade secrets theft. Specifically, she represents clients on various sides of employee mobility and trade secret disputes—the former employer, the new employer and interested third parties. Saluja also defends employers against claims of discrimination, harassment, retaliation, wage and hour violations, and wrongful termination.

**MISTY M. SANFORD**

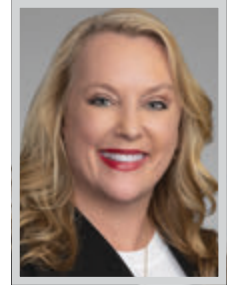
Partner  
Munger, Tolles & Olson LLP

Misty M. Sanford is a partner in the Los Angeles office of Munger, Tolles & Olson, where she maintains a thriving real estate and land use practice, representing some of the world's leading institutional investors, private equity firms, developers, multi-national corporations, REITs, foundations, non-profits and individual entrepreneurs. Over the last year, Sanford has left her fingerprints on some of the most notable developments in California and beyond. One example is her work advising the property developer Tishman Speyer on the Mission Rock development. Tishman Speyer is partnering with the San Francisco Giants to develop the iconic 28-acre development located across from Oracle Park, the team's stadium. A member of the American College of Real Estate Lawyers, the premier organization of distinguished U.S. real estate lawyers, she is also actively involved in pro bono matters and community affairs.

**JESSICA SHARRON**

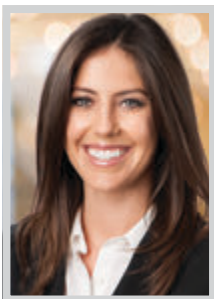
Partner  
Alston & Bird

Jessica Sharron is a partner in Alston & Bird's Construction & Government Contracts Group, where she represents clients in myriad industries in both litigation and transactional matters. Sharron's clients include health care companies, banks, telecommunications companies, and construction contractors and other industry professionals. For clients relying on her government contracts expertise, she provides advice on what it takes to comply with the multitude of federal, state, and local procurement rules and regulations, including the Federal Acquisition Regulation, federal agency supplemental regulations, and state equivalent rules governing public procurement. As an advocate, Sharron represents government contractors in adversary proceedings like bid protests, affirmative and defensive claims litigation under the Contract Disputes Act, False Claims Act litigation, and government investigations.

**MONICA J. SHILLING**

Partner  
Kirkland & Ellis

Monica Shilling understands what it takes for clients to create opportunities. She enjoys bringing her creativity and experience to clients as they navigate complex mergers & acquisition and capital markets transactions. As a lead partner in the Los Angeles office of Kirkland & Ellis, she maintains a broad corporate and securities law practice that focuses on advising asset managers, private equity funds, and their portfolio companies on the full lifecycle of transactions. She also represents public companies, financial advisors, investment banks and issuers in connection with their leveraged buyouts, general corporate law and corporate governance, securities laws, and NYSE/Nasdaq compliance. Shilling represented longtime client, Ares Capital Corporation, the largest business development company by both market capitalization and total assets, with approximately \$14.9 billion of total assets, in numerous matters.

**KATY SPILLERS**

Partner  
Greenberg Glusker LLP

Becoming a partner at Greenberg Glusker early in her career, Katy Spillers has continued to impress by handling many of the firm's most interesting corporate matters. Establishing herself as a leader in the firm, Spillers serves on the strategic planning committee and for the past four years has led the firm's international legal efforts as a member of the board of the World Law Group, a global network of leading independent law firms. She has been involved in both lateral and associate recruiting and mentorship throughout her career. With a focus on representing women CEOs and founders, Spillers handles a broad range of business transactions for entrepreneurs as well as emerging growth and middle-market companies. Spillers represents clients in a wide variety of industries, but has particular expertise advising branded consumer products, technology/new media and entertainment companies.

**JULIA B. STRICKLAND**

Managing Partner of the Los Angeles Office  
Stroock & Stroock & Lavan LLP

As co-chair of Stroock's national Litigation Department, a member of Stroock's Executive Committee and chair of its Financial Services Litigation, Regulation and Enforcement Group, Julia Strickland is often the first attorney called when a financial services company needs anything from practical guidance to a fierce defense of a contentious and high-stakes litigation matter, as well as for counseling on federal or state regulatory compliance and the full range of matters arising from lending and servicing, retail banking, real estate and unfair and deceptive practices. She has amassed a client list that includes titans of their industries, including American Express, Citigroup, Discover, Goldman Sachs, JPMorgan Chase, HSBC, Synchrony and OneWest/CIT Bank. Strickland's professional accomplishments in the past 18 months are particularly noteworthy and diverse, ranging from settlements on behalf of major financial institutions and aerospace financiers to trial and appellate victories for banks and real estate investment funds.

**ELLIA M. THOMPSON**

Partner  
Ervin Cohen & Jessup LLP

At the end of 2009, after developing expertise in land use and planning law, Ellia Thompson decided to open her own small firm dedicated to representing developers, business owners, and property owners in overcoming the regulatory, environmental, and political obstacles to property use and development. Unlike many other land use lawyers in Los Angeles, she does not represent anyone or any group who opposes development or other people's property rights. During the next six years, she honed her skills to handle every issue facing a property owner or developer in Los Angeles and throughout Southern California, including: entitlement approvals, housing issues, environmental concerns, litigation, and even defense of criminal prosecution related to property citations. In early 2016, Thompson moved her land use team to the firm of Ervin, Cohen and Jessup. Her ability to see realities and opportunities that other people in real estate have missed has significantly helped grow her Land Use practice.

**VIVIAN LEE THOREEN**

Executive Partner, Chair of Private Wealth Services  
Dispute Resolution Team  
Holland & Knight LLP

Vivian Lee Thoreen is the executive partner of Holland & Knight's Los Angeles office and chairs the firm's national Private Wealth Services Dispute Resolution Team. She is a litigator and experienced trial attorney whose practice – both in Superior Court and in the California Courts of Appeal – focuses on complex trust, estate, conservatorship and guardianship matters. She represents individuals, families, charities and financial institutions in cases including will and trust disputes, contested conservatorships and guardianships, breach of fiduciary duty matters, and elder abuse matters. Thoreen's experience includes some of the most sensitive and high profile cases in her field. Whether the matters can be resolved by mediation or require trial, Thoreen's clients benefit from her deep personal commitment and nuanced grasp of law and often byzantine facts. An active member of the community, Thoreen is a Fellow of the American College of Trust and Estate Counsel.

TOP WOMEN ATTORNEYS



**NICOLE RODRIGUEZ VAN DYK**

*Principal*

Bird, Marella, Boxer, Wolpert, Nessim, Drooks, Lincenberg & Rhow, P.C.

Nicole Rodriguez Van Dyk has continued to demonstrate a knack for solving some of the most complex and intricate legal problems on behalf of her clients. Van Dyk possesses extensive experience defending clients in criminal matters related to government contracting fraud, mortgage fraud, and labor violations, as well as civil qui tam actions and business disputes. In recent years, she has secured a string of victories related to her representation of health care providers in state and federal criminal prosecutions and parallel civil proceedings, as well as complex civil litigation. She has also successfully defended clients in a variety of related areas, including workers' compensation fraud, false billing, improper referrals, compound medications, and physician-owned distributorships through victories both in and outside the courtroom. Her current clients include a MLB team and a global aerospace defense contractor.

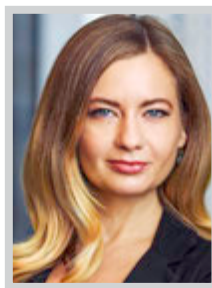


**TANYA VINER**

*Shareholder*

Buchalter

Tanya Viner's practice focuses on mergers and acquisitions, representing both the buyer and seller in large complex transactions ranging from the sale of closely held family businesses to transactions in excess of a billion dollars. In addition to her mergers and acquisitions practice, Viner provides day-to-day counseling on a broad range of transactional and governance matters advising emerging growth companies on formation, venture capital financing, licensing, and employment issues, often acting as outside general counsel, and trusted advisor throughout every aspect of growth. Viner advises clients on matters in nearly every major business sector, including consumer product, apparel and textiles, food and beverage, technology, beauty, financial services, manufacturing, and retail. Viner's clients appreciate her practical approach in offering both legal and business advice to ensure their goals are met and the deal gets done.



**JENIFER WALLIS**

*Partner*

Munck Wilson Mandala LLP

Jenifer Wallis brings more than 14 years of legal experience, working in a law firm with more than 70 attorneys who represent clients in three of the fastest growing tech economies in the U.S. – Los Angeles, Austin, and Dallas. Wallis has a unique legal practice that focuses on intellectual property, complex litigation, and entertainment. In business litigation, Wallis represents clients as the lead chair in trade secret, trademark, and copyright infringement lawsuits in state and federal courts. She routinely handles trademark and copyright infringement actions, and she serves as general counsel to large and small companies, advising them on IP portfolios and other matters. In entertainment law, Wallis acts as general counsel to production companies, negotiating with networks on their behalf, and drafting all necessary talent agreements, location agreements, production schedules, and other legal documents. Wallis has been the legal architect in the complicated company structure of groundbreaking productions.



**PAMELA KOHLMAN WEBSTER**

*Shareholder*

Buchalter

Pamela Kohlman Webster is the Chief Financial Officer and Executive Vice President of Buchalter. She is also a member of the Board of Directors and is a Shareholder at the firm. As Chief Financial Officer, Webster helps direct the development of the firm's finance strategy and leads finance-related strategic initiatives. She is responsible for the management and maintenance of the firm's records of account including the properties and business transactions of the firm. During her 38 years of service, Webster has worked diligently to support the expansion and success of the firm. Beginning her career as an attorney at Buchalter, she developed a distinguished legal practice and has become a highly influential lawyer in her field. She has previously served as the firm's managing shareholder and chief executive officer with the distinguished accomplishment of being the first female attorney in that role.

**REDDOCK LAW GROUP**  
EMPLOYMENT LAW & MEDIATION  
Workplace Conflict Resolution Specialists™

*Congratulations to*



**Managing Partner**  
Angela Reddock-Wright, Esq.  
on being named a  
2020 Los Angeles Business Journal  
Top Woman Attorney

TO BOOK ANGELA FOR YOUR NEXT  
MEDIATION OR ARBITRATION  
Contact  
Heather Reed  
Senior Case Manager at Judicate West  
714.852.5181  
heather@judicatewest.com

[www.reddocklaw.com](http://www.reddocklaw.com)  
[www.judicatewest.com](http://www.judicatewest.com)

Thompson Coburn proudly congratulates  
LA Office Managing Partner **Jennifer Post**  
on her recognition as one of the  
*Top Women Attorneys* in Los Angeles




**Jennifer Post**  
Corporate & Securities

TOTAL  
COMMITMENT  
TO DIVERSITY  
& INCLUSION

**THOMPSON COBURN** LLP  
thompsoncoburn.com

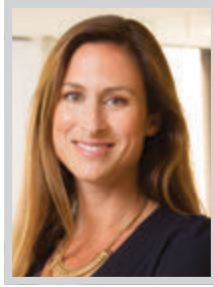
Los Angeles | Dallas | Chicago | St. Louis | Southern Illinois | Washington, D.C.

TOP WOMEN ATTORNEYS



**DONNA L. WILSON**  
*CEO and Managing Partner*  
 Manatt, Phelps & Phillips, LLP

In June 2018, Donna Wilson was elected to serve as Manatt, Phelps & Phillips, LLP's CEO and managing partner, a role that officially began in July the following year. Her elevation stands out in the legal industry for numerous reasons, not the least of which is the fact that she is both a woman and a member of the LGBTQ+ community. Since her elevation in July 2019, Wilson has successfully brought this unique perspective to bear in her efforts to expand Manatt's reach into new geographies as well as the restructuring of the firm to focus on industry groups, rather than traditional practice areas. Through her efforts to build the professional services firm of the future – one built on a foundation of inclusivity – she has overseen the opening of the firm's 10th office in Boston and the acceleration of the growth of Manatt's pool of elite talent.



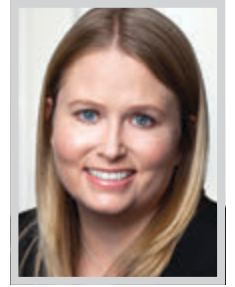
**COURTNEY WRIGHT**  
*Partner*  
 Alston & Bird

Courtney Wright is a partner in Alston & Bird's Los Angeles office. She focuses her practice on the areas of real estate finance and the capital markets. She has particular experience in the representation of institutional lenders, investment banks, mezzanine funds, and portfolio lenders in connection with the origination of commercial mortgage loans, mezzanine loans, and loan restructurings for all asset classes. Recently, Wright became a leader of Alston & Bird's LIBOR (London Interbank Offered Rate) Transition Task Force, a new working group focused on assisting companies in the U.S. and globally in managing the transition from LIBOR and addressing the risks presented by the expected discontinuation of this major benchmark interest rate after 2021. Among her notable recent matters has been her work representing Credit Suisse in the construction financing of a boutique "historic building" hotel in Pasadena.



**DEBRA WONG YANG**  
*Partner and Chair of the Crisis Management Practice Group*  
 Gibson, Dunn & Crutcher LLP

Debra Wong Yang has spent the past decades honing a practice where she is breaking through barriers and practicing where the law is just emerging. She has had a groundbreaking career – first Asian-American woman to serve as a U.S. Attorney, former California state judge, and, reflective of her broad practice and comprehensive abilities, current co-chair of Gibson Dunn's Crisis Management Practice Group. Given the depth of experience and record of success, Yang focuses part of her practice on strategic counseling. She leads critical representations, both high profile and highly confidential, involving a wide variety of industries, economic sectors, regulatory bodies, law enforcement agencies, global jurisdictions and all types of proceedings. Her clients are in the private and public sectors and include the University of Southern California, MGM Resorts, UCLA and the UC Regents and NeoPollard Interactive LLC.



**ASHLEY YEARGAN**  
*Partner*  
 Russ August & Kabat

Ashley Yeargan has quickly become one of the go-to litigators for individuals and small companies in the entertainment industry. In the last year, she won her first federal jury trial and has worked with her partner and mentor Larry Stein as the day-to-day lawyer on various high profile matters, such as litigation for Drake, litigation for the conservatorship of Britney Spears, representation of Simon Cowell in various matters including claims raised by Gabrielle Union in connection with the decision not to renew her contract on America's Got Talent, and various other significant matters that were resolved confidentially. Yeargan has represented a variety of clients in the media and entertainment industry and focuses her practice on matters involving defamation, rights of privacy and publicity, copyright and trademark infringement, and breach of contract. She has litigated in federal and state courts as well as before various arbitral tribunals in California.



**Munck Wilson Mandala**  
 congratulates Jenifer Wallis on her selection as  
 a 2020 Top Women Attorney.



We are the difference | [munckwilson.com](http://munckwilson.com)  
 Dallas | Austin | Los Angeles

LARSON O'BRIEN  
 congratulates  
 our partners  
**KOREN ("KORI")  
 L. BELL**  
 AND  
**HILARY  
 POTASHNER**  
 for being named among  
 the TOP WOMEN  
 ATTORNEYS of 2020  
 by the *Los Angeles  
 Business Journal*

**LARSON · O'BRIEN** LLP

Unrivaled Experience. Unrelenting Advocacy. Unparalleled Results.

[www.larsonobrienlaw.com](http://www.larsonobrienlaw.com)